

*Michael R. Wigley, AIA, LEED AP
W. Zachary Crouch, P.E.
Michael E. Wheelleton, AIA, LEED GA
Jason P. Loar, P.E.
Ring W. Lardner, P.E.
Jamie L. Sechler, P.E.*

WACHAPREAGUE SEWER FEASIBILITY STUDY
TOWN OF WACHAPREAGUE
ACCOMACK COUNTY, VIRGINIA
DBF #3904F001.A01

July 8, 2021

ENGINEER'S REPORT TO TOWN COUNCIL

Introduction

Robert Duma, P.E., Associate
Davis, Bowen & Friedel, Inc.
rjd@dbfinc.com
(410) 543-9091

Regional Sewer

- HRSD proceeding with constructing forcemain from Nassawadox, through Exmore, to Onancock.
- HRSD will come within two miles of Wachapreague
- HRSD will have capacity to serve the sewer needs of Wachapreague

Town Sewer


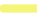



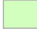

- Targeting commercial and water front commercial sewer needs with study
- Future sewer needs can be met with additional phases of sewer expansion
- Sewer flows provided in table
- Study reviewing gravity sewer, grinder pumps, or vacuum sewer collection system

Next Steps

- Continue coordinating with HRSD
- Receive preliminary alignment and design data of pipeline from HRSD
- Receive input from Town Council and other interested parties
- Finalize study and provide project costs



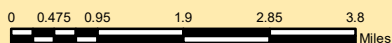
Legend

-  Pump Station
-  HRSD Pipeline
-  Forcemain
-  Sewer
-  Town Boundary
-  VIMS Service Area
-  Downtown Service Area

Preliminary Exhibit



July 2021



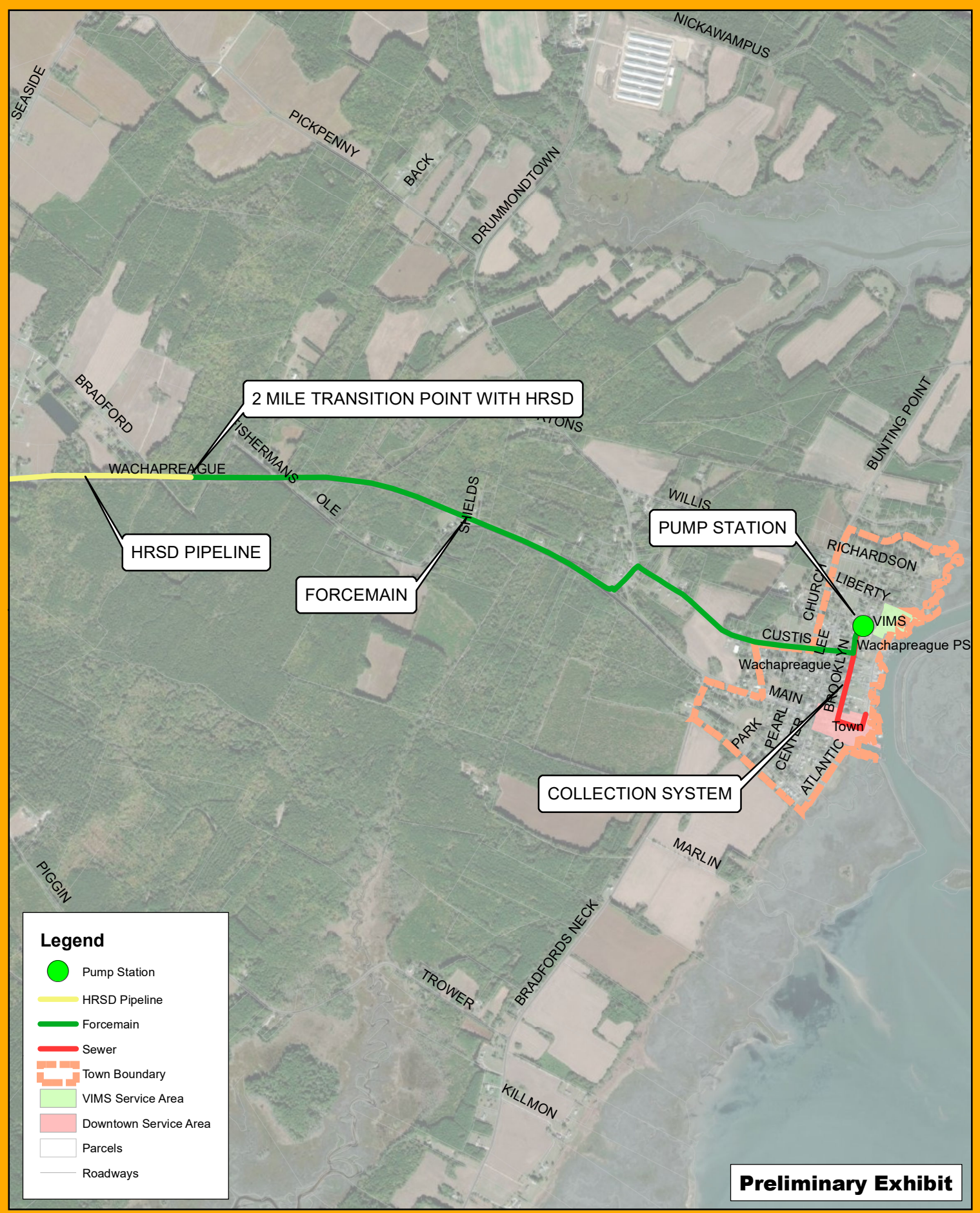
Overall Sewer Map

Wachapreague Sewer Feasibility Study

DBF #3904A001.A01



L:\3904A Wachapreague\3904A001.A01 Sewer Feasibility Study\DESIGN\GIS\Maps\Wachapreague Layout Map.mxd



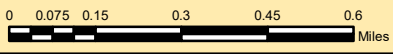
Legend

- Pump Station
- HRSD Pipeline
- Forcemain
- Sewer
- Town Boundary
- VIMS Service Area
- Downtown Service Area
- Parcels
- Roadways

Preliminary Exhibit



July 2021



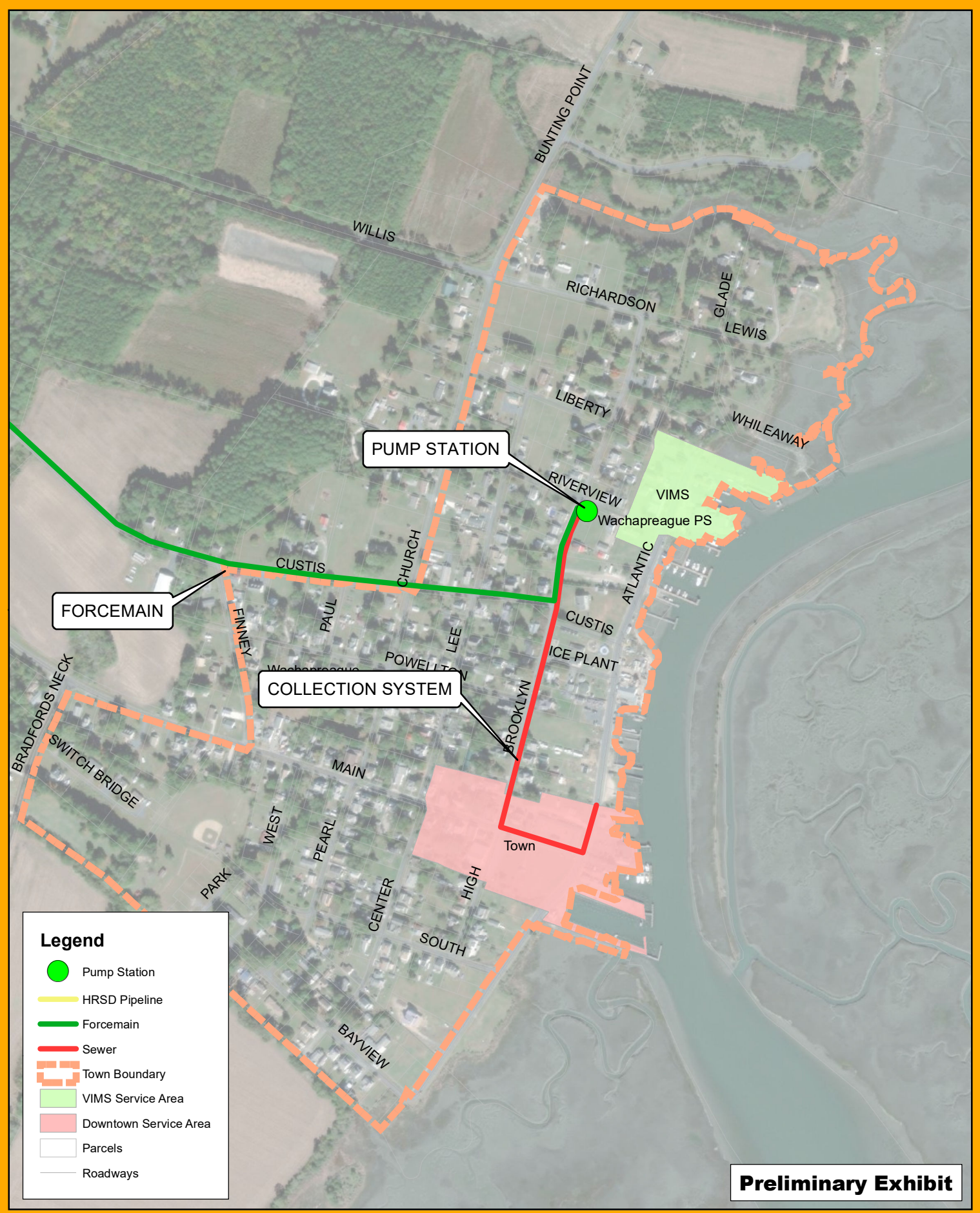
Planning Area Sewer Map

DBF #3904A001.A01

Wachapreague Sewer Feasibility Study



L:\3904A Wachapreague\3904A001.A01 Sewer Feasibility Study\DESIGN\GIS\Maps\Wachapreague Layout Map.mxd



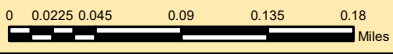
Legend

- Pump Station
- HRSD Pipeline
- Forcemain
- Sewer
- Town Boundary
- VIMS Service Area
- Downtown Service Area
- Parcels
- Roadways

Preliminary Exhibit



July 2021



Town Sewer Map

Wachapreague Sewer Feasibility Study

DBF #3904A001.A01



**WACHAPREAGUE SEWER FEASIBILITY STUDY
TOWN OF WACHAPREAGUE, ACCOMACK COUNTY, VIRGINIA
PREPARED BY DAVIS, BOWEN & FRIEDEL, INC.
DBF #P0002020.021
May 3, 2021**

SEWER FLOW PROJECTION ESTIMATE

Item No.	Description	Units	Flow/Unit (GPD/Unit)	Total Flow (GPD)
1	VIMS	-	-	2,820
2	Hotel	60	130	7,800
3	Commercial	25	250	6,250
4	Current Residential	185	250	46,250
5	Growth Area Residential	73	250	18,250
6	Growth Area Residential - 2	16	250	4,000
TOTAL FUTURE SEWER FLOW				85,370

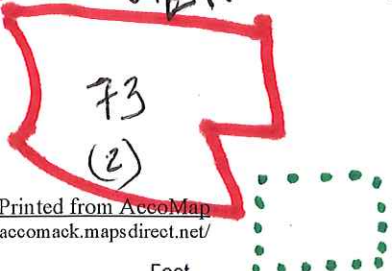
Sewer Feasibility
Study Service Area

Accomack County, Virginia

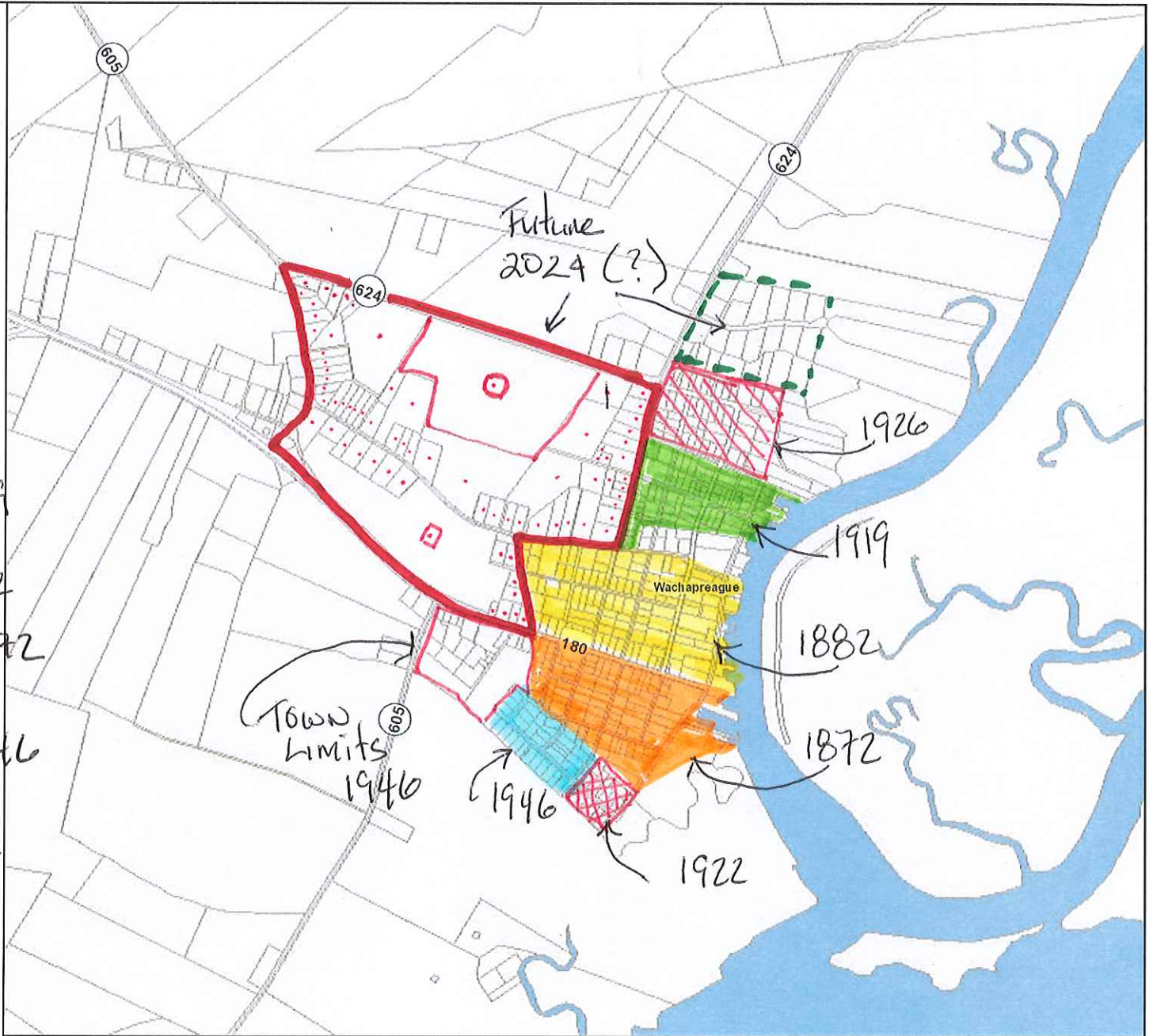
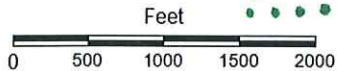
Legend

Road Labels

-  WACH TOWN
-  WACH FD & TOWN ED
-  RICHARDSON ADDITION - 1926
-  RIVERSIDE PARK - 1919
-  DEVELOPED BY FLOYS - 1882
-  POWELLTON - 1872
-  SOUTHERN VIEW - 1946
-  SOUTHERN VIEW - 1922



Map Printed from AccoMap
<http://accomack.mapsdirect.net/>



Title:

Date: 6/10/2020

DISCLAIMER: This drawing is neither a legally recorded map nor a survey and is not intended to be used as such. The information displayed is a compilation of records, information, and data obtained from various sources, and Accomack County is not responsible for its accuracy or how current it may be.